



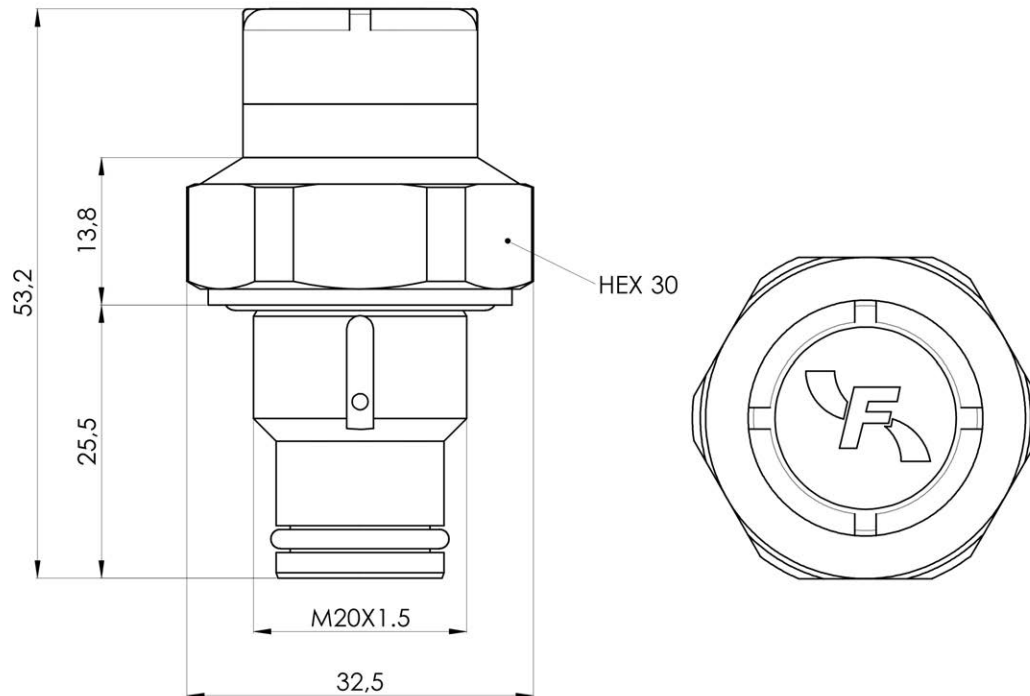
V SERIES

Visual differential clogging indicators



| | |
|------------------------|---|
| PRESSURE: | Max operating up to 420 bar |
| CONNECTION: | M20x1,5 |
| MATERIALS: | Body: Brass Cap: PA66 Lens: PA12 Seal: NBR standard FKM on request |
| SETTINGS ΔP : | 2,7 bar $\pm 10\%$ 5,0 bar $\pm 10\%$ 8,0 bar $\pm 10\%$ |
| DEGREE OF PROTECTION: | IP65 |
| OPERATING TEMPERATURE: | -30°C - +80°C |
| FLUID COMPATIBILITY: | Full with HH-HL-HM-HV-HETG-HEES-HFA HFB-HFC (acc. to ISO 6743/4). For use with other fluid please contact Filtrtec Customer Service (info@filtrtec.it). |

OVERALL DIMENSIONS



Weight: 107 gr

MECHANICAL CONDITION

ΔP CONDITION

VISUAL CONDITION

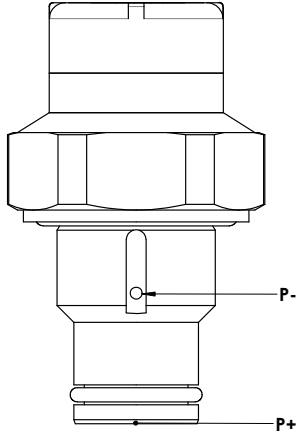

$P_+ - P_- < \Delta P_{set}$: GREEN

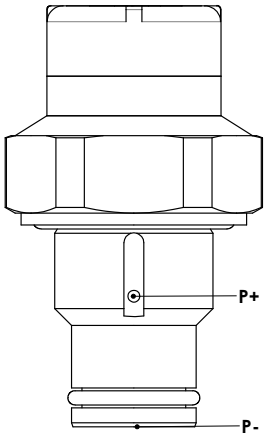



$P_+ - P_- \geq \Delta P_{set}$: RED



ORDERING INFORMATION / DETAILS

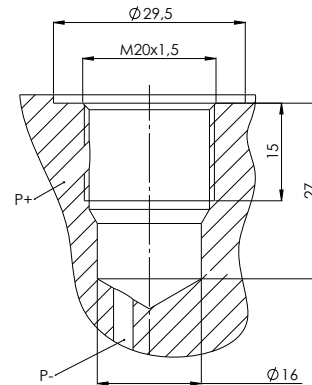
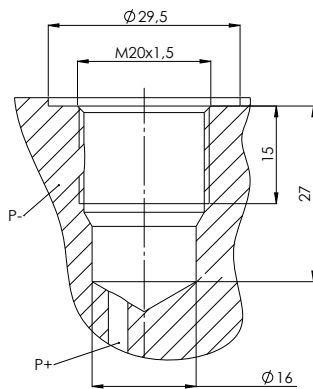
| ORDER CODE | MODEL | SEALS | VIEW | SETTING |
|--|--------------------------|------------|--|---------|
| 04.006.00119 04.006.00120 | V02 VF2 | NBR FKM |  | 2,7 bar |
| 04.006.00121 04.006.00122 | V05 VF5 | NBR FKM | | 5,0 bar |
| 04.006.00125 04.006.00126 | V08 VF8 | NBR FKM | | 8,0 bar |
|  50 / 90 Nm - See hydraulic filter catalogues | | | | |

| ORDER CODE | MODEL | SEALS | VIEW | SETTING |
|--|--------------------------|------------|--|---------|
| 04.006.00518 04.006.00519 | VX2 VY2 | NBR FKM |  | 2,7 bar |
| 04.006.00123 04.006.00124 | VX5 VY5 | NBR FKM | | 5,0 bar |
| 04.006.00127 04.006.00128 | VX8 VY8 | NBR FKM | | 8,0 bar |
|  50 / 90 Nm - See hydraulic filter catalogues | | | | |

INDICATOR SEAT

V0.../VF...

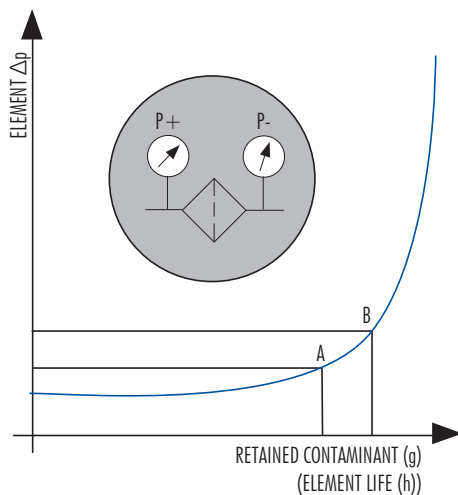
VX.../VY...



Dimensions and tolerances available on request

USER INFORMATION

The Differential indicator measures the Δp between upstream and downstream of the filter element, i.e. it is the ideal indicator for the in line applications.



The **Pressure Drop** (Δp = differential pressure) through the filter increases during the system operation due to the contaminant retained by the filter element.

The filter element must be replaced when the indicator shows an alarm and before the Δp reaches the by-pass set value (i.e. the set value A of the clogging indicator must always be lower than the set value B of the by-pass value).

WARNING: in **cold start** conditions a false alarm can be caused by higher oil viscosity due to low temperature; the indicator alarm must be considered at normal working temperature only.

OPTIONAL VERSION

Subject to MOQ our differential indicators type V... can be supplied in special versions with brass cap instead of plastic. **Contact our Customer Service for further information.**

| ORDER CODE | MODEL | SEALS | SETTING |
|--------------|------------|-------|---------|
| 04.006.00172 | VB5 | NBR | 5 bar |
| 04.006.00150 | VB8 | | 8 bar |

INDICATOR SEAT

The following table shows the type of indicator available according to the filter used.

| APPLICATION | FILTER CODE | INDICATOR MODEL | | | | | |
|-------------------------|-----------------|-----------------|---------|---------|---------|---------|---------|
| | | V02/VF2 | V05/VF5 | V08/VF8 | VX2/VY2 | VX5/VY5 | VX8/VY8 |
| IN LINE HIGH PRESSURE | F100 | X | X | X | | | |
| | F280 | | X | X | | | |
| | F420 | | X | X | | | |
| | FD3 | | | | | X | X |
| | FDM | | | | | X | X |
| | FH100 | X | X | X | | | |
| | FH250 | | X | X | | | |
| | FH320 | | X | X | | | |
| | FH420-D1 | | X | X | | | |
| | FML320 | | X | X | | | |
| IN LINE MEDIUM PRESSURE | FLR | | | | X | X | X |
| | FLRD | | | | X | X | X |
| | F040 | X | X | X | | | |
| RETURN | FCR7F2x | X | | | | | |
| | FCR7F3x | X | | | | | |
| SPIN-ON | FAH-A14x | X | | | | | |
| | FA5 | | | | X | | |
| | FA4 | | | | X | | |

