



Quick start FUF050

TRANSFER AND FILTRATION PORTABLE UNIT FOR DIESEL



Read the safety and operating instructions before use!

EMPTY UNIT: fit the spin-on filter before use

GENERAL WARNINGS

1. The unit can only be used by authorized and trained personnel after having read and understood the Operating Manual.
2. The Operating Manual must be given to the operator and kept. The unit holder is responsible for it.
3. The operator must be informed and trained on the content of the Operating Manual, and their understanding must be verified.
4. The operator is responsible for the correct use of the portable unit, based on the information provided in the Operating Manual and the training received.
5. Before connecting the portable unit to the power supply, check that the outlet is properly protected against overloads and short circuits.
6. Verify that the voltage and frequency of the power supply correspond to the data indicated on the portable unit label.
7. Always ensure to work under safe conditions and never in precarious situations.
8. The product images published in the manuals are for illustrative purposes only and may be subject to change.
9. FILTREC SPA assumes no liability for damages resulting from improper use. The risks associated with improper use are solely the responsibility of the user.
10. Before any intervention on the portable unit, unplug the power supply.
11. Any maintenance and repair operations must be carried out by qualified personnel.



PROHIBITIONS AND OBLIGATIONS

1. Use only Diesel (UNI EN 590).
2. Not use for/with petrol (gasoline) or solvent with flash point < 55 °C (131 °F)
3. The use of unauthorized liquids is strictly forbidden.
4. Avoid contact between the electrical supply and the liquid to be filtered.
5. Perform work and maintenance operations only when the lighting is adequate.
6. Carry out maintenance and cleaning operations with the unit stopped and powered off.
7. It is strictly forbidden for unauthorized personnel to stay in the work area.
8. It is strictly forbidden to smoke or use open flames during work phases.
9. Removing safety devices and protections is strictly prohibited.
10. The use of unsuitable or non-supplied accessories with the machine is strictly forbidden.
11. The use of the unit in environments with a potentially explosive atmosphere is strictly forbidden.
12. Transporting or moving the machine while it is operating and dispensing is prohibited.

13. Towing the unit with any type of vehicle is strictly forbidden.
14. Climbing on the equipment is prohibited.
15. Supporting or transporting the equipment by the electrical power cable is prohibited.
16. Supporting or transporting the equipment by the suction or delivery hose is prohibited.
17. Improper use of the equipment is strictly forbidden.
18. Always wear protective equipment that is suitable for the operations to be performed and resistant to the products used for cleaning the unit.
19. Do not touch electrical parts and cables with wet hands.
20. Do not turn on the unit if the power cord or other critical parts of the device are damaged. Replace the damaged component immediately.

FIRST AID RULES – CONTACT WITH TREATED FLUID

For issues arising from contact between the treated fluid and the eyes or skin, refer to the safety data sheet of the treated fluid. For issues arising from inhalation or accidental ingestion of the treated fluid, refer to the safety data sheet of the treated fluid.

For specific information, refer to the safety data sheet of the treated fluid.

PROTECTIVE EQUIPMENT TO WEAR

Always wear protective equipment that is suitable for the operations to be performed. For moving, installing, and disposing of the unit, wear the following protective equipment:



Safety shoes



Close-fitting clothing



Protective gloves



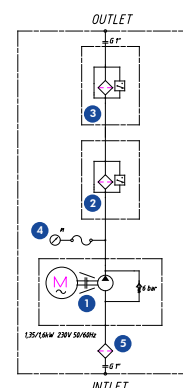
Safety glasses

Furthermore, the operating manual must be provided to the operator and kept accessible

TECHNICAL AND DIMENSIONAL DATA

Models	Diesel Filtration Unit FUF050MG2V50
Dimensions L, W, H [mm]	490 X 645 X 1006
Weight [Kg]	62
Voltage [V]	230 – single phase
Frequency [Hz]	50-60
Power consumption [kW]	1,6
Nominal Flow Rate [l/min]	50
Operating temperature [°C]	-10 / +50 (temperature range of the product to be dispensed)
Max working pressure [bar]	5
Particle removal filter efficiency	see spare elements
Water absorbent filter efficiency	see spare elements
Suction Filter "Y"	metal mesh 500 µm

HYDRAULIC SCHEME



- 1 Vane Pump 1,6 kW + pressure relief valve 6 bar
- 2 Particle removal filter
- 3 Water absorbent filter
- 4 Pressure Gauge
- 5 Suction Filter "Y" 500 µm

INTENDED USE AND APPROVED FLUIDS

The intended use of the filtration unit is to treat Diesel (UNI EN 590). Approved fluids include petroleum-based or synthetic fluids with a flash point above 55 °C (131 °F).

Always ensure that the temperature of the dispensed fluid is at least 10 °C (18 °F) lower than the fluid's flash point.

It is recommended to consistently treat the same fluid. The use of the unit for different fluids is not advised.



The unit can be used as a transfer unit. In this case, thanks to the high performance of FILTREC filters, the unit ensures that the destination tank is supplied with clean fluid.



The unit can also be used as a tank cleaning system. In this scenario, the unit, leveraging the high performance of FILTREC filters, can be used to clean the fluid inside a tank by recirculating it through the filters.

PROHIBITED FLUIDS

1. Gasoline, alcohol, flammable liquids with a flash point < 55 °C (131 °F), and solvents
2. Water
3. Food-grade liquids
4. Corrosive chemicals
5. Liquids with a viscosity greater than 300 cSt

Using prohibited fluids may result in fire, explosion, seal damage, pump oxidation, pump corrosion, personal injury, motor overload, and other issues.

Any use that deviates from the intended purpose as described in the Operating Manual is considered improper use. Therefore, Filtrac disclaims all liability for any resulting damages.

DIESEL FILTRATION UNIT INSTALLATION

1. Suction Hose Assembly: screw the suction hose (spiral, PVC) onto the suction port.
2. Discharge Hose Assembly: screw the discharge hose onto the discharge port of the filters, which is connected to the second filter.
3. Terminal Assembly: independently mount the suction/discharge rigid end onto the suction/discharge hoses.
4. Filter Installation: mount the spin-on filters (use only original FILTREC spin-on filters).
5. Electrical Connection: connect the power supply to the 220V outlet using the appropriate plug.

FILTER INSTALLATION AND FILTER REPLACEMENT

The filter mounting bracket is labelled to identify the position of the filters (Filter #1 for particle removal; Filter #2 water absorbent).



Before replacing the cartridges, the unit must be disconnected from all power sources by unplugging it from the power supply panel. During cartridge replacement, it is mandatory to use personal protective equipment. Be aware that the cartridges may be hot during replacement.



During the cartridge replacement process, ensure to have additional containers placed underneath the filter assembly. This is to catch any excess liquid that might not be fully contained within the liquid collection tray, preventing contamination of the surrounding area.

The following procedures describe how to install or replace a filter cartridge.

1. Make sure that the system is switched off and there is no residual pressure in the filter.
2. Unscrew the cartridge by turning it anti-clockwise and remove it. Check the condition of the gasket located at the end of the threaded spigot; replace it if necessary.
3. Fit a new FILTREC cartridge, verifying the part number, particularly concerning the micron rating
4. Ensure that the head mounting face is clean.
5. Lubricate the gasket of the replacement cartridge and the thread prior to assembly.
6. Spin on the new cartridge until it reaches the mounting face and tighten for 1/2 turn.



USAGE PROCEDURE

1. Secure the ends of the hoses to the tanks or firmly hold the end of the discharge hose before starting an operation.
2. Once the plug is inserted, press the "activation button" (1) and then the "start button" (2) to start the device. The transfer and filtration of the fluid will then begin. To stop the operation, press the "stop button" (3).



1. During operation, the lances, filters, and motor can become hot. Wear the appropriate personal protective equipment and exercise caution.
2. In case of EMERGENCY, press the "emergency button". Once the emergency is resolved, restart the device by pressing the "activation button" (1).



1. Do not use the pump dry. Do not start or stop the pump by connecting or disconnecting the power supply.
2. When the system is not in use, it is recommended to keep the pump turned off.

SHUTDOWN

1. To stop the operation, press the "stop button" (3).
2. Unplug the main power supply from the generator.
3. Once the operation is completed, rewind the power cable, input and output hoses/fittings. Exercise caution when draining the fluid and insert the metal ends into the designated casings. Wear the appropriate personal protective equipment and exercise caution.

CLOGGING OF FILTERS

1. If the particle removal filter clogging indicator light comes on during operation, proceed with replacing the particle removal filter.
2. If the water absorbent filter clogging indicator light comes on during operation, proceed with replacing the water absorbent filter.
3. If both indicator lights come on during operation or if the pressure gauge reaches 5 bar with both indicator lights off, proceed with replacing both filters.

ORDERING INFORMATION SPARE ELEMENTS

1.	2.	3.	4.	5.	6.
A5	22	G01	V	0	/AB2
1. FILTER ELEMENT SERIES	A5				
2. FILTER SIZE	22				
3. FILTER MEDIA	G01	glassfiber $\beta_{(1000)} \geq 10.000$ Anti ESD -AbsoluteBeta Sparkbuster technology included			
	G03	glassfiber $\beta_{(1000)} \geq 5.000$ Anti ESD -AbsoluteBeta Sparkbuster technology included			
	G06	glassfiber $\beta_{(1000)} \geq 2.000$			
	G10	glassfiber $\beta_{(1000)} \geq 2.000$			
	G25	glassfiber $\beta_{(1000)} \geq 2.000$			
	G40	glassfiber $\beta_{(1000)} \geq 1.000$			
	GW40	glassfiber $\beta_{(1000)} \geq 1.000$ + water absorbent			
	AW40	water absorbent only (higher water retention capacity)			
4. SEAL	V FKM				
5. BYPASS VALVE	0 no bypass				
6. ELEMENT SUFFIX	/AB2 AbsoluteBeta 2 - very high capacity / efficiency filter element				

FILTER ELEMENT - Preferred filter media - For the complete range of elements available, refer to the A522x series catalog.

For any questions please contact:

FILTREC S.p.A.
 24060 TELGATE (Bergamo) ITALY
 Via dei Morengi, 1 - www.filtrac.com
 Tel. +39 035 8368001 - Fax +39 035 831925
 E-Mail: info@filtrac.it